

946 Series Relay

FEATURES

- UL safety approval.
- Standard type & High sensitivity type available.
- 2 Amps super miniature relay.
- Conforms to FCC rules & regulation part 68.
- Surge strength: 1500 VAC.
- 1 Form C (SPDT) contact.
- Nominal power 200mW~360mW.
- Operating power 110mW~200mW.
- DIL pitch terminal.
- Washable Type (ultrasonic cleaning is not recommended).



UL FILE NO: E162117

ORDERING INFORMATION

	946	H	-	1C	-	12	-	D	-	F
	1	2		3		4		5		6
1. Model Number										
2. Coil Sensitivity										
Nil = Standard Type										
H = High Sensitive Type										
3. Contact Arrangement										
1C = 1 Form C (SPDT)										
4. Coil Voltage										
3~24V										
5. Coil Type										
D: DC										
6. Terminal arrangement										
Nil = General Type										
F = Movable contact terminal & Coil terminal at one Side										

COIL RATINGS (at 20°C)

COIL TYPE	Coil Nominal Voltage (V)	Coil Resistance ($\Omega \pm 10\%$)	Pick-Up Voltage (V) \leq	Drop-Out Voltage (V) \geq	Nominal Current (mA)
DC Standard Coils	3	25	2.25	0.3	120
	5	70	3.75	0.5	71.4
	6	100	4.5	0.6	60
	9	220	6.75	0.9	40.9
	12	400	9	1.2	30
	24	1600	18	2.4	15
DC High Sensitive Coils	3	45	2.25	0.3	66.7
	5	125	3.75	0.5	40
	6	180	4.5	0.6	33.3
	9	405	6.75	0.9	22.2
	12	720	9	1.2	16.7
	24	2880	18	2.4	8.3

* Max Continuous Voltage at 20°C: 130% of Coil Nominal Voltage.

946 Referential Data

CONTACT RATINGS

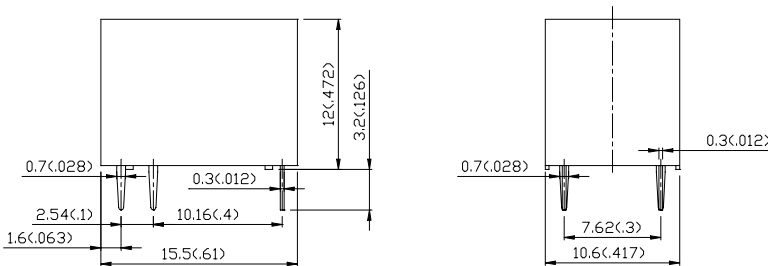
Contact Arrangement	1 Form C (SPDT)
Max. Switching Power	125VA 60W
Max. Switching Voltage	125VAC 30VDC
Max. Switching Current	2A
Contact Resistance	≤100mΩ
Rating Load	1A/125VAC 2A/30VDC
Contact Material	AgNi10

CHARACTERISTICS

Electrical Life	1 × 10 ⁵
Mechanical Life	1 × 10 ⁷
Initial Insulation Resistance	Min. 100MΩ 500VDC
Contact Resistance (Initial)	≤100mΩ
Operate Time	≤6ms
Release Time	≤3ms
Initial Dielectric Strength	50/60Hz 500VAC 1 min. (between open contact) 50/60Hz 500VAC 1 min. (between all conductors)
Vibration Resistance	Malfunction: 10 to 55Hz at Double Amplitude of 1.5mm Destructive: 10 to 55Hz at Double Amplitude of 1.5mm
Shock Resistance	Malfunction: 10G (11ms) / Destructive: 100G (6ms)
Ambient Temperature	-20°C ~ +40°C
Relative Humidity	85% at 40°C
Unit Weight	Approx. 3g

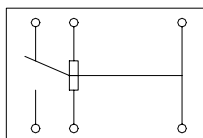
OUTLINE DIMENSIONS

Dimensions

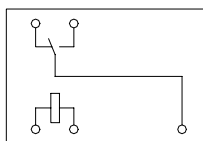


REMARK: Tolerance of outline dimensions: ±0.1(.004).

Internal Connections (Bottom View)

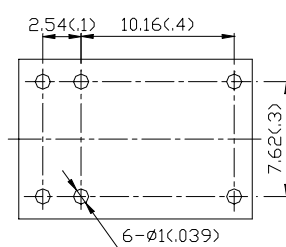


General Type



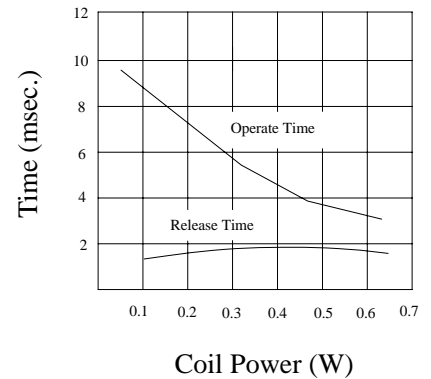
F Type

Drilling Plan (Bottom View)

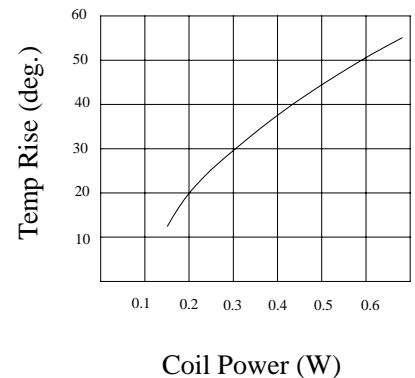


UNIT: mm (inch)

Timing

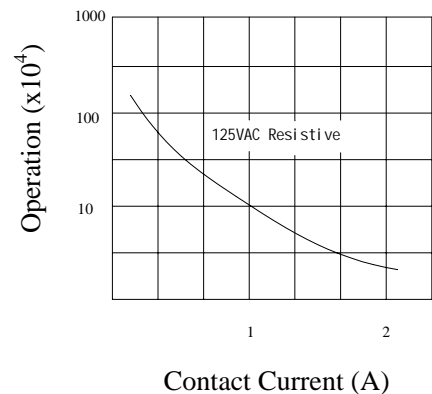


Coil Temperature Rise



Coil Power (W)

Life Curves



Contact Current (A)